

70 New Barns Avenue, Chorlton, Manchester, M21 7DG

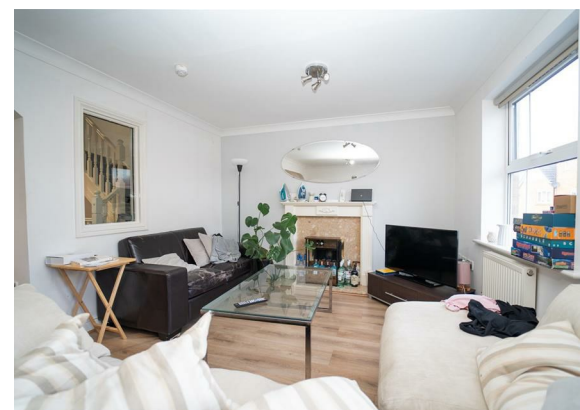
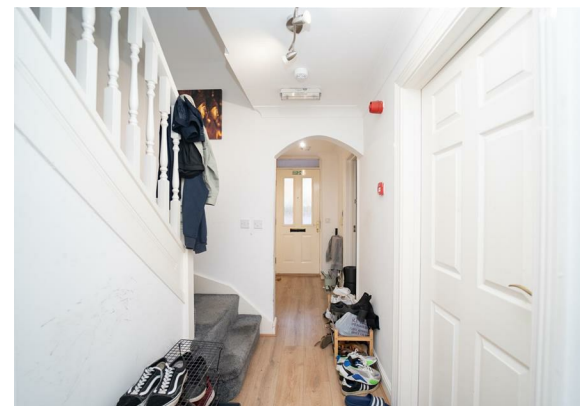


JP&Brimelow
ESTATE AGENTS

Offers In The Region Of £375,000

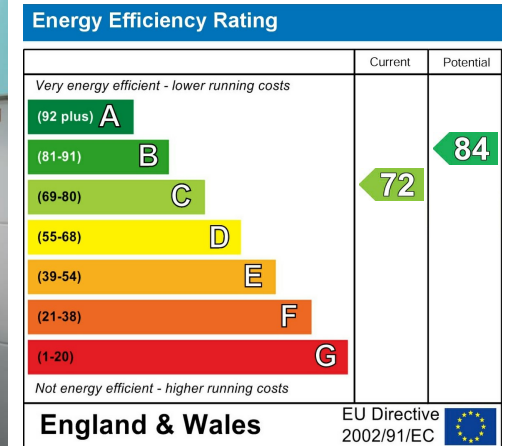
 5  3  2  C

VIDEO TOUR AVAILABLE A spacious FIVE BEDROOM, three storey modern townhouse situated on this popular residential development, off Nell Lane in Chorlton. Close by to Chorlton Park Primary School and Chorlton Park. In brief, the well-planned accommodation to the ground floor consists of; an entrance hall with a downstairs W.C, two bedrooms and a useful utility room, with access into the rear garden. Whilst to the first floor there is a landing leading to a spacious L shaped lounge and a fully fitted kitchen. To the second floor there are three further good sized bedrooms with an en-suite shower room to the master bedroom, as well as a three-piece family bathroom. The property benefits from gas fired central heating, double glazing, an enclosed rear garden and secure allocated parking to the rear. It is also within walking distance to the Metrolink Station on St Werburgh's Road, giving you direct access to the city centre and Media city. (Currently tenanted on a AST).





EPC Chart



Tenure: **Freehold** Council Tax Band: **E**



JP & Brimelow Estate Agents Ltd
430 Barlow Moor Road, Manchester, M21 8AD
Tel: 0161 8822233

E: sales@jpbrimelow.co.uk www.jpandbrimelow.co.uk



JP & Brimelow
ESTATE AGENTS

NOTICE: JP & Brimelow Estate Agents Ltd for themselves and for the vendors or lessors of this property whose agents they are give notice that:

- (i) the particulars are set out as a general outline only for the guidance of intending purchasers or lessees, and do not constitute, nor constitute part of, an offer or contract;
- (ii) all descriptions, dimensions, references to the condition and necessary permissions for use and occupation, and other details are given in good faith and are believed to be correct but any intending purchasers or tenants should not rely on them as statements or representations of fact but must satisfy themselves by inspection or otherwise as to the correctness of each of them;
- (iii) no person in the employment of JP & Brimelow Estate Agents Ltd has any authority to make or give any representation or warranty whatever in relation to this property.

jpandbrimelowestateagents

@jpandbrimelow